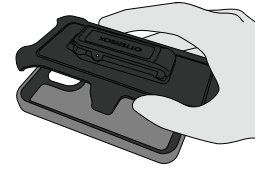
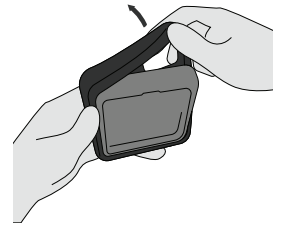


# Defender Series Pro Installation Instructions

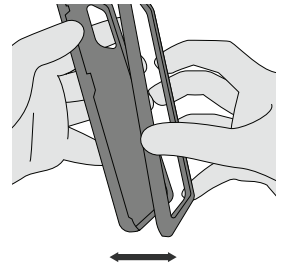
**1** Remove case from holster (if applicable).



**2** Peel away and remove the outer slipcover.



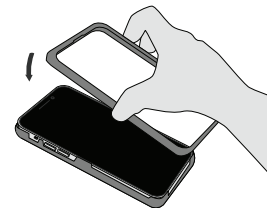
**3** Separate the shell halves by locating the indicated arrows and releasing each snap along the sides.



**4** Place the device into the bottom half of the shell.



**5** Place the shell top half on the device and snap the two pieces together along all edges.



**6** Wrap the slipcover around the shell. Ensure silicone slipcover is nested in groove and notches on all sides for a tight, secure fit.

