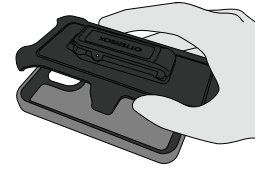
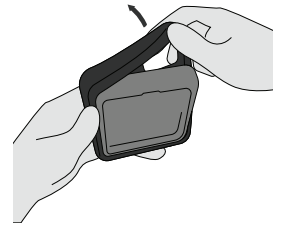


Defender Series Installation Instructions

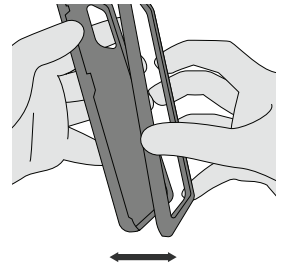
1 Remove case from holster (if applicable).



2 Peel away and remove the outer slipcover.



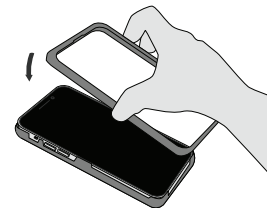
3 Separate the shell halves by locating the indicated arrows and releasing each snap along the sides.



4 Place the device into the bottom half of the shell.



5 Place the shell top half on the device and snap the two pieces together along all edges.



6 Wrap the slipcover around the shell. Ensure silicone slipcover is nested in groove and notches on all sides for a tight, secure fit.

